

# TPU Highly Flexible and Elasticity 3D Printer Filament



**200°C~230°C**  
Print Temp



**20-40MM/s**  
Printing Speed



Highly Flexible



Highly Elasticity



Highly Softness



Good Tensile



Strong Resistance



Smooth Surface

# Reliable Filament For Your 3D Print



No Tangle



No Clogging



No Bubble



Less Warping



High Precision



Non-Toxic



# 95A TPU Flexible Filament



**35%**

Elongation at break

**PLA**



**600%**

Elongation at break

**TPU**



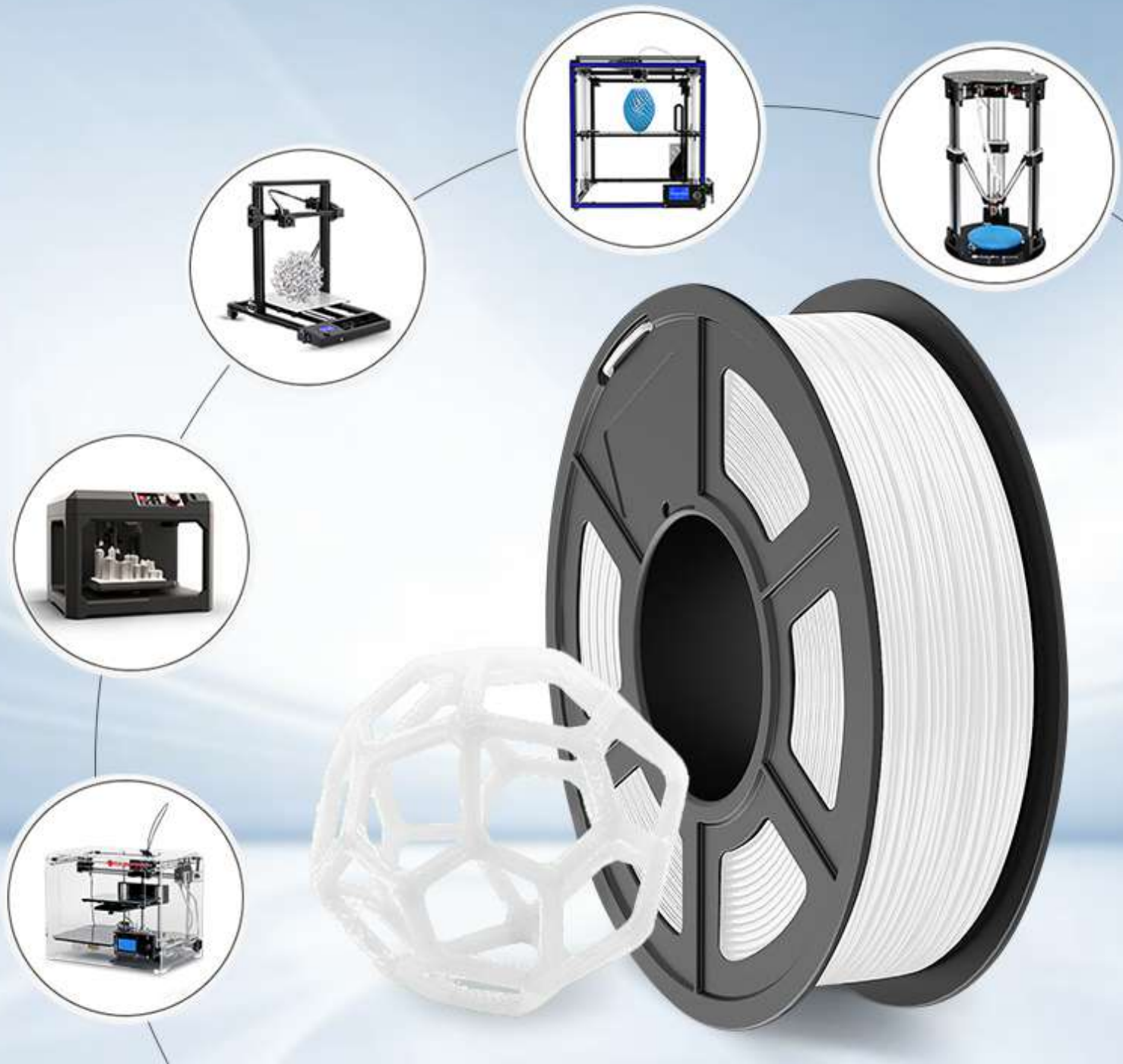
**45%**

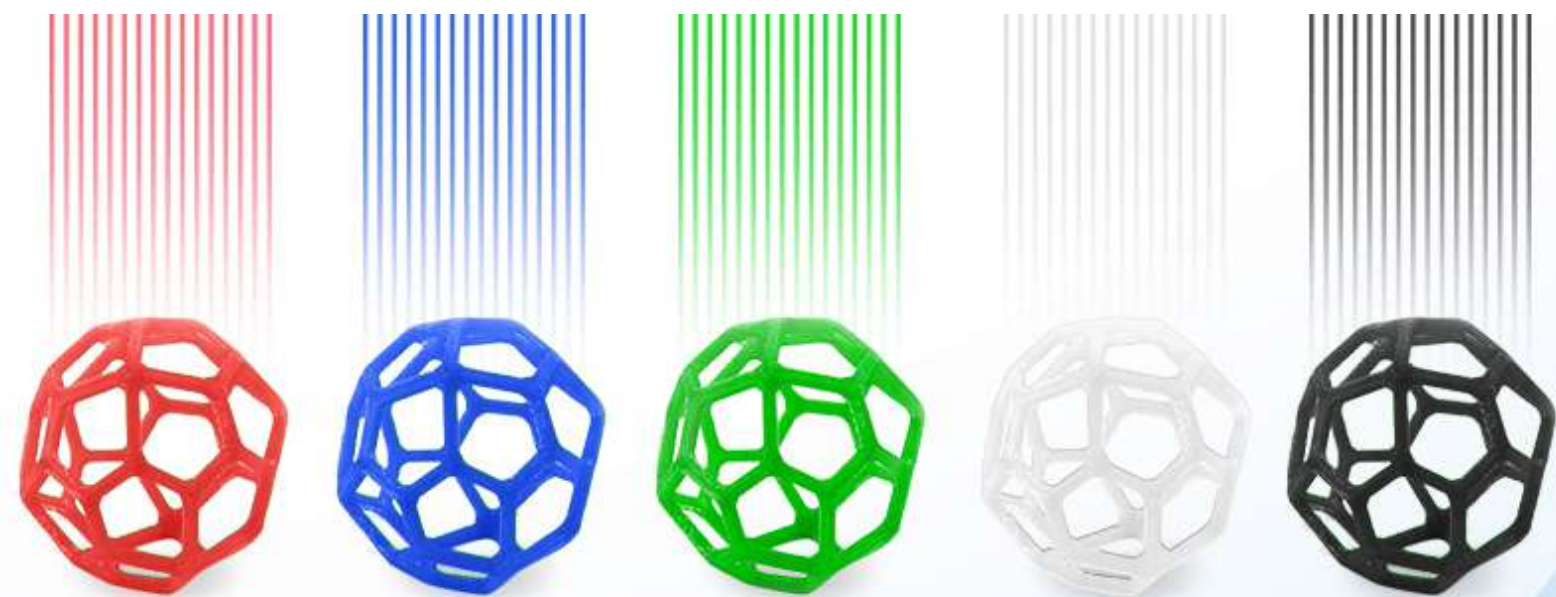
Elongation at break

**PLA+**



# Work For 99% FDM 3D Printer





## **CoLiDo TPU Filament Painted or Stained After Printing**

